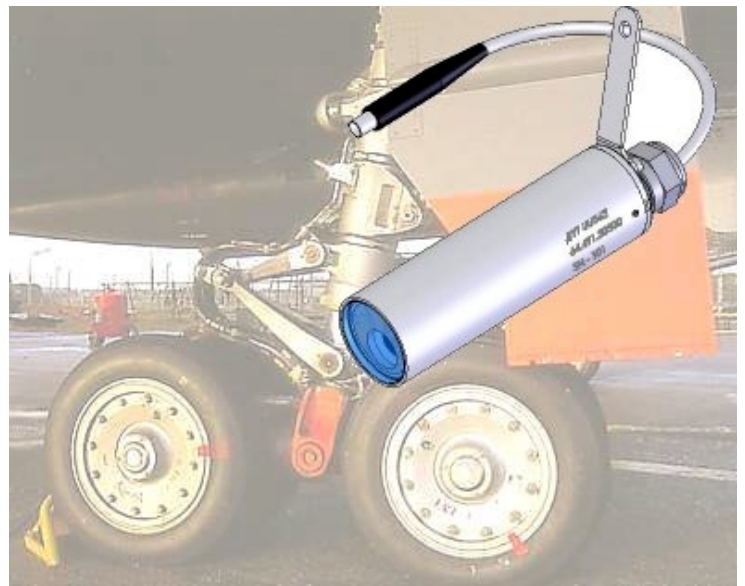


Small size remote head ruggedized color camera

CAMERA HEAD UNIT

- 1/4" Color CCD
- Horizontal resolution : 480 TV lines
- Waterproof IP 68
- Lens Available : 2.2 / 4 / 8 / 15 mm
- Integrated heater
- Length = 71 mm / Diameter = 23 mm
- Shock resistant
- Anti Mist & Anti Freeze



CAMERA CONTROL UNIT

- Analog PAL Output
- Digital SDI Output
- RS 485 half duplex PC Control
- On screen menu (OSD)
- Power requirement 28V / 33 W
- Integrated heater
- Shock resistant
- Dimensions 140 x 172 x 110 mm
- Weight 2kg



Mardel Image – SAS au capital de 314 280 euros

siège social – 5 rue des Briquetiers – ZA Fontgrasse – 31700 BLAGNAC – T : 05.62.74.88.00 – F : 05.62.74.88.19

Design, features and specifications are subject to change without notice

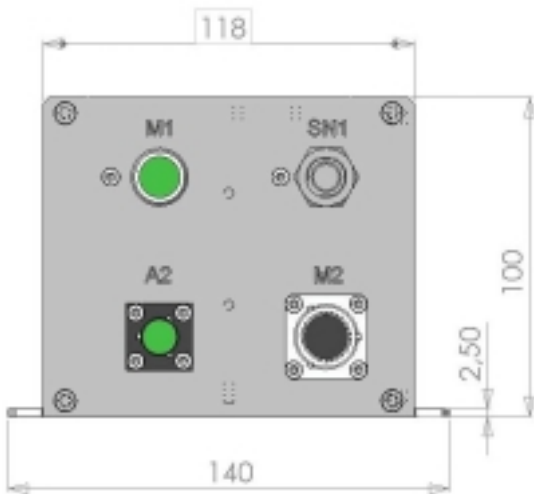
FEATURES

0307 camera	
Image device	1/4" - 752 x 582 px
Scanning	2:1 interlaced
Video resolution	480 L TV
White Balance	Automatic / Set / Manual
AGC	On / Off
Electronic shutter	Automatic / manual: 1/50s to 1/10 000s
Exposure	Auto / Manual / Spot aera
Synchronisation	Internal
Power requirement	28v / 33 W
Analog Output	PAL - 1 Volt / 75 ohm / 50 Hz
Digital Output	SDI - SMPTE 259 / 0.8 Volt / 50 Hz

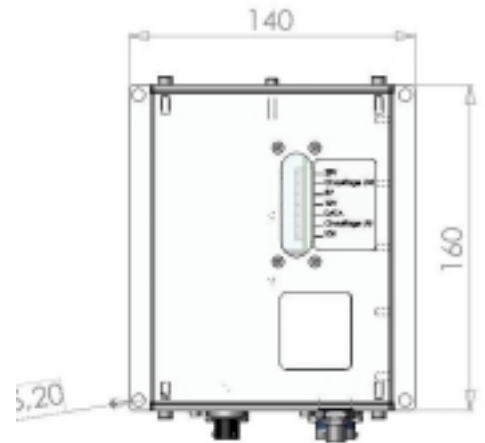
0307 camera	
PC control	RS 485 half duplex
Control Leds	28V/datas/CCU heater/CHU heater
Shock (DO160D/7B)	20 g / 11 ms
Acceleration (DO160D/7B)	V:6g / L:9g / I:4g
Operating temperatue	- 55°C / + 55°C
Available lens (mm)	2.2 (79°) 4 (50°) 8 (25°) 15 (14°)
Available cable	10 .5 m or 6.5 m
CHU Dimensions	Diam = 23 mm - Length = 71 mm
CCU Dimensions	140 mm x 172 mm x 100 mm
CHU Weight	0.2 kg
CCU Weight	2.2 kg

CCU Front face

CCU Upper face



M1	FISHER DBPE 1031 A019-139E No pts: 19 pts Camera
M2	JTP000RT12-359023 No pts: 22 pts In/Out interface
A2	SOURIAU ASNE 0053 RB83 APN No pts: 4 pts Power supply 28 Volts
SM1	R1 42-066 Embase BNC 75 Ohms No pts: 2 pts - coaxial Digital Output SDI

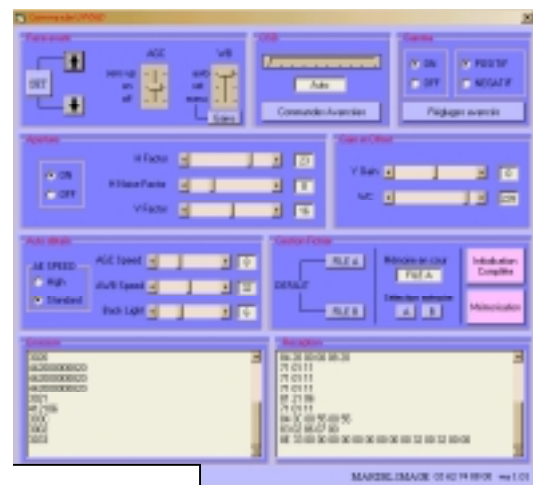
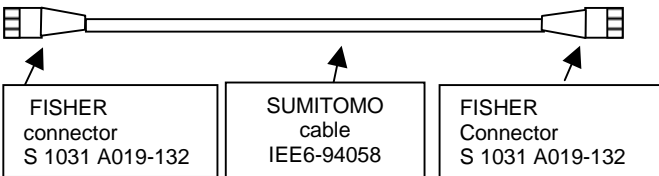


CABLES

SOFTWARE - Not supplied

L 1 = 6.5 m

L 2 = 10.5 m



Mardel Image – SAS au capital de 314 280 euros

siège social – 5 rue des Briquetiers – ZA Fontgrasse – 31700 BLAGNAC – T : 05.62.74.88.00 – F : 05.62.74.88.19

Design, features and specifications are subject to change without notice